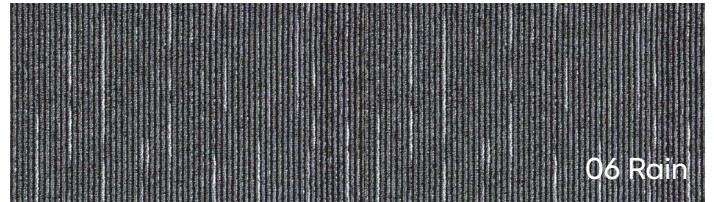
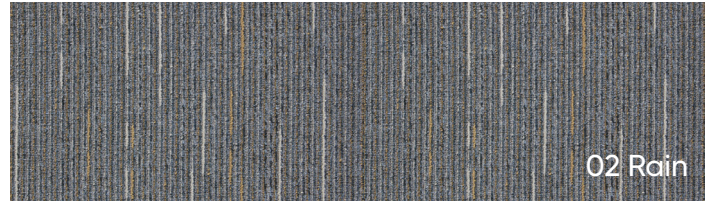


# CARPET TILE

## RAIN



### SPECIFICATIONS

<b>Supplier:</b>	Kraus®	
<b>Fiber System:</b>	100% BCF Solution Dyed Polypropylene	
<b>Modular Size:</b>	19.7" x 19.7"	50 cm x 50 cm
<b>Backing System:</b>	EuroBac™	
<b>Construction:</b>	Multilevel Loop	
<b>Gauge:</b>	1/10	39.4 rows/10 cm
<b>Stitches:</b>	10.6 s.p.i.	42.0 stitches/10 cm
<b>Avg. Density:</b>	6,400	
<b>Pile Height:</b>	0.15"/0.11"/0.07"	4mm/3mm/2mm
<b>Pile Weight:</b>	16 oz./y <sup>2</sup>	550 g/m <sup>2</sup>
<b>Static generation:</b>	3.0 kV or less (AATCC 134)	
<b>Flammability:</b>	ASTM E648 - Class I (direct glue) DOC FF 1-70 - passes	
<b>Colorfastness to light:</b>	5.0 (AATCC 16)	
<b>CRI/CCI air quality test:</b>	Green Label Plus	

### CARTON CONFIGURATION

**Pcs/Carton:** 24 | 7.17 sq.yds./carton  
**Packaging:** 64.58 sq.ft./carton  
**Installation:** Kraus | Premium Adhesive™ KPA-99

### WARRANTIES

- 10 Year** Commercial Wear
- 10 Year** Backing Performance
- 10 Year** Stain Proof – No Exceptions™

### INSTALLATION METHODS



### FEATURES

**Wear** Built to perform, Kraus carpet tiles offer superior strength and durability from face fiber to backing.

**Backing Performance** Kraus carpet tiles are manufactured to provide dimensional stability and will not delaminate from face fiber or edge ravel. Our Backing Performance warranty guarantees that the backing on this product will not shrink, grow, cup or dome, which ensures easy installation and product longevity.

**10 Year Stain Proof – No Exceptions™** Perfecting the balance between dye technology and understanding a fiber's construction, Kraus carpet tiles feature an exceptional Stain Proof – No Exceptions warranty. Most spills can be easily removed through gentle blotting, allowing your carpet tile to remain attractive and stylish for years.



The natural characteristics of geometric or linear patterns in carpet tile can result in double-dark or double-light lines at the seam and to some degree a pattern run-off or bias. This is not a manufacturing defect. These characteristics should always be taken into consideration when choosing the installation method of a modular carpet. Product image colors may vary due to print processes and monitor display settings. To ensure that the installation meets the manufacturers requirements please note that Kraus Premium Adhesive is the recommended and required adhesive for this product. Failure to use this adhesive may void any warranty related claims. Please see installation instructions for full details. See harrisflooring.com for latest specifications.